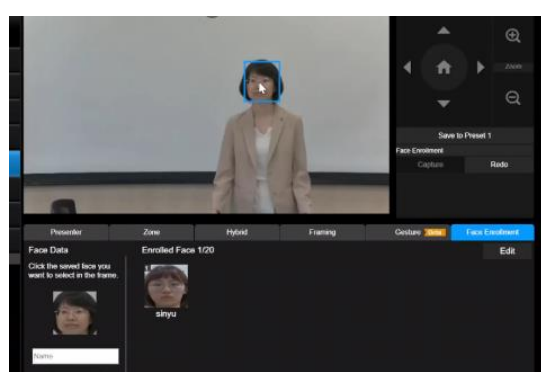
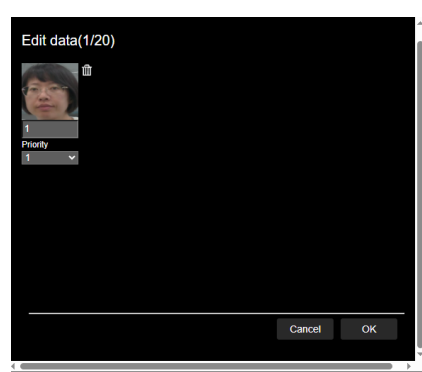
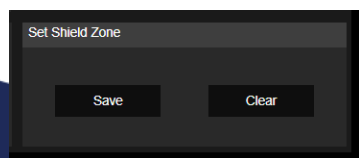


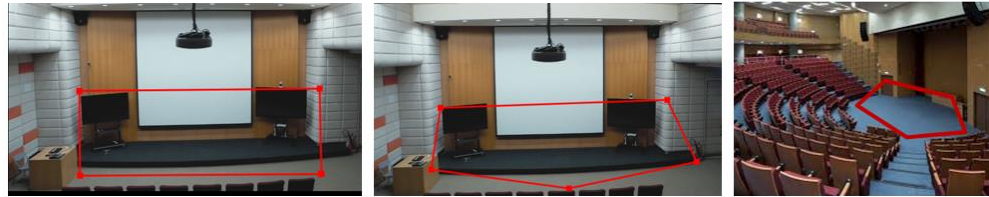
Release note

Product: Tracking Camera TR615

FW version	V0.0.0000.33
Release date	2026/04/07
New Feature	<p>1. Added Face Enrollment feature to preload presenter faces, ensuring the camera only tracks designated professors while skipping students' faces to comply with school privacy rules. Supports preloading up to 20 presenter faces, making classroom tracking more accurate and secure.</p> <div data-bbox="399 705 1436 1131" style="border: 1px dashed gray; padding: 10px;"> <p>Note: Face Enrollment – Privacy Notice</p> <ul style="list-style-type: none"> ➤ Registered face data is stored only inside the camera and will not be transmitted to AVer or third parties. ➤ Data is used only for auto-tracking, not for other purposes. ➤ Users can delete registered face data at any time. ➤ Inform the person before enrollment and obtain consent if required by local law. ➤ Use must comply with applicable privacy and data protection regulations (e.g., GDPR, CCPA). </div> <div data-bbox="430 1153 1404 1523" style="display: flex; justify-content: space-around;">   </div> <p>2. Added Shield Zone feature to allow skipping a presenter's face during Teams calls. The current version supports configuring <u>one shield zone</u>. Users can click the "Set" button, drag a box on the screen to define the shielded area, and click "Save" to complete the setup. This helps prevent unwanted tracking and ensures smoother video performance.</p> <div data-bbox="430 1836 790 1993" style="text-align: center;">  </div>

Improvement

1. Enhanced the effective tracking area shape from a rectangle (four corners) to a pentagon (five corners), allowing better coverage of round stages and ensuring more accurate presenter tracking.



Note: All five angles of the pentagon must be convex (outward), and none of them can be concave (inward).

✓ **correct setting**



✗ **Incorrect setting**

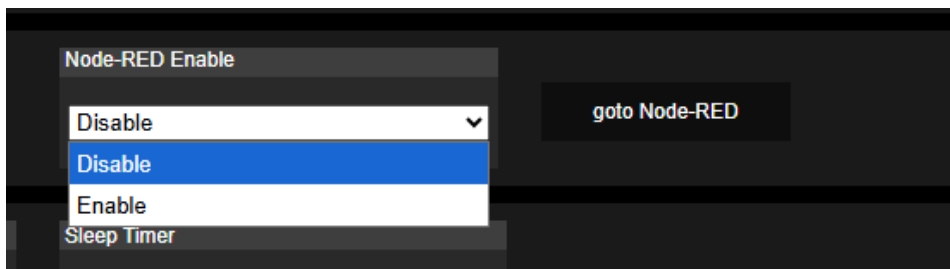


2. Configuration Persistence Improvement
Improved system behavior to retain streaming settings (bitrate and frame rate) after reboot, ensuring a more consistent user experience.

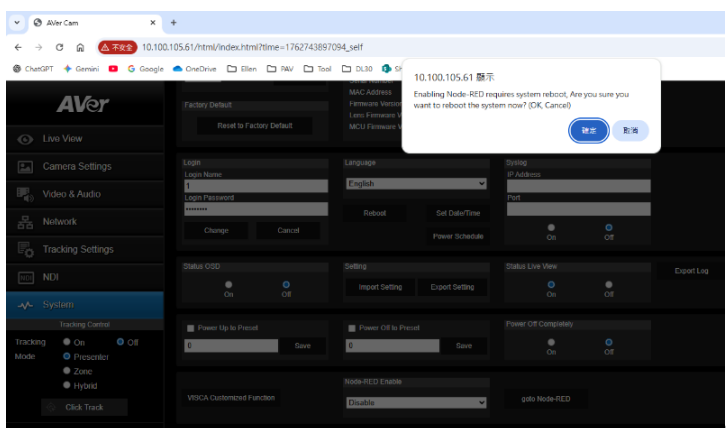
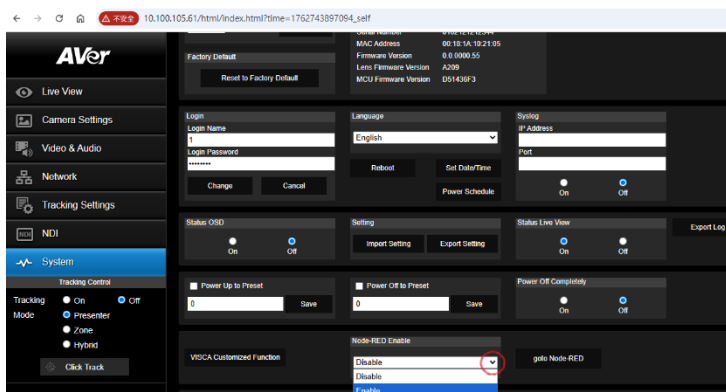
FW version	V0.0.0000.29
-------------------	---------------------

Release date	2025/11/07
---------------------	------------

New Feature	<p>Node-RED Integration</p> <p>Added Node-RED support to enable visual flow-based programming for camera control and system integration.</p> <p>This feature allows users to easily create automation workflows (e.g., trigger presets, start/stop streaming, or integrate with third-party devices) without coding.</p>
--------------------	---

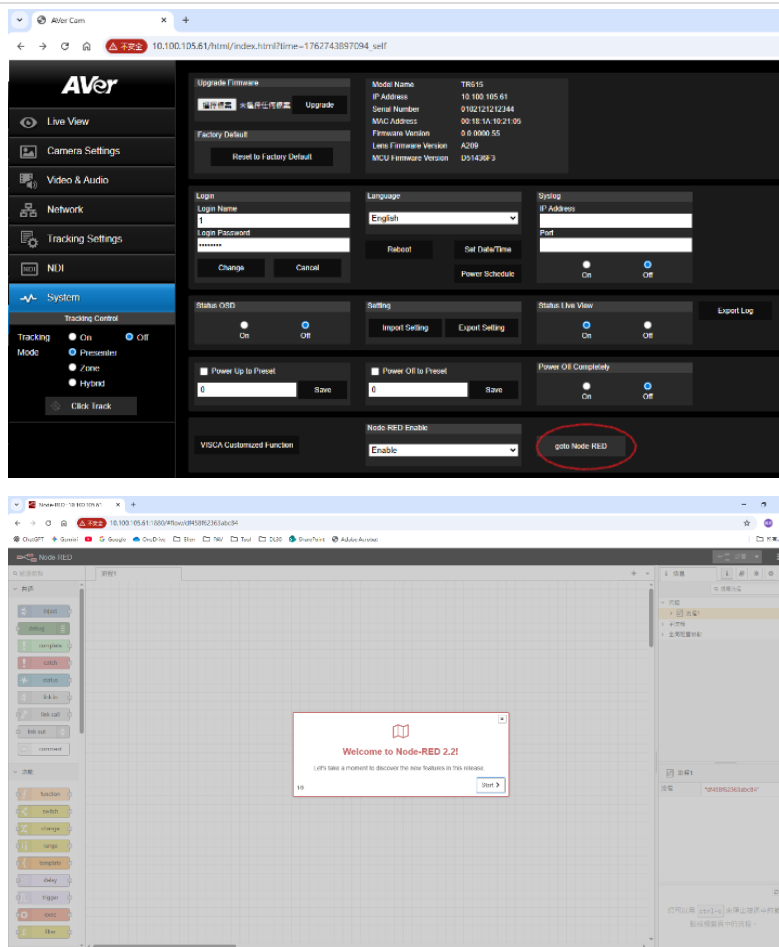


How to enable Node-RED. Go to TR615 webpage and click the button below.



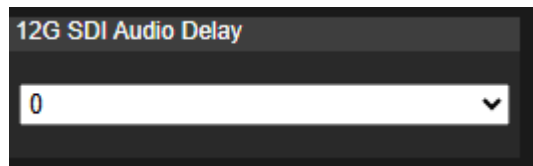
After the TR615 reboot is complete, click the 'goto Node-RED' button below to launch the Node-RED page. You can find the introduce as below link:

<https://www.youtube.com/playlist?list=PLYNBB9VCLmo1hyO-4fIZ08ggFcXBkHy-6>



Improvement

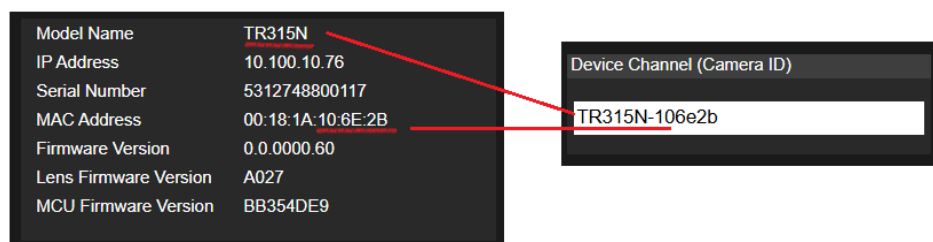
3. Simultaneous pan and tilt movement when transitioning to a preset position, providing a smoother and more fluid visual experience.
4. Improved auto focus transition speed between preset positions with identical zoom ratios during voice tracking on the MT300 to deliver a smoother visual experience.
5. Added 12G-SDI audio delay configuration to the Web UI (Video & Audio page) to allow more precise audio adjustment.



6. **(Bug Fixed)** Fixed random slight movement of the preset position during Zone Tracking.

FW version	V0.0.0000.25																				
Release date	2025/9/02																				
New Feature	<p>Remote Control (Hotkey) Support</p> <p>The remote control now supports the following hotkey functions:</p> <table border="1"> <thead> <tr> <th>Button</th> <th>Function name</th> <th>How to use</th> <th>Functions description</th> </tr> </thead> <tbody> <tr> <td>6</td> <td>Factory default</td> <td>Press 6 times (666666)</td> <td>Restore factory default settings</td> </tr> <tr> <td>7</td> <td>AI frame*</td> <td>Press 7 times (7777777)</td> <td>Shown Human AI frame on HDMI output</td> </tr> <tr> <td>8</td> <td>Set Static IP</td> <td>Press 8 times (88888888)</td> <td>Set the IP address to static IP (192.168.1.168)</td> </tr> <tr> <td>9</td> <td>Account Default</td> <td>Press 9 times (999999999)</td> <td>Restore account settings to default</td> </tr> </tbody> </table> <p>*AI Frame: Highlights detected human frames for visual confirmation.</p>	Button	Function name	How to use	Functions description	6	Factory default	Press 6 times (666666)	Restore factory default settings	7	AI frame*	Press 7 times (7777777)	Shown Human AI frame on HDMI output	8	Set Static IP	Press 8 times (88888888)	Set the IP address to static IP (192.168.1.168)	9	Account Default	Press 9 times (999999999)	Restore account settings to default
Button	Function name	How to use	Functions description																		
6	Factory default	Press 6 times (666666)	Restore factory default settings																		
7	AI frame*	Press 7 times (7777777)	Shown Human AI frame on HDMI output																		
8	Set Static IP	Press 8 times (88888888)	Set the IP address to static IP (192.168.1.168)																		
9	Account Default	Press 9 times (999999999)	Restore account settings to default																		
Improvement	<p>1. Added support for setting presets 6/7/8/9 in both directions on Zone Tracking, making it easier for users to configure and reducing the chance of setup errors.</p> <div style="display: flex; justify-content: space-around; align-items: center;"> <div style="text-align: center;"> <p>Original: from left to right</p> </div> <div style="text-align: center;"> <p>Added: from right to left</p> </div> </div> <p>2. Upgrade NDI SDK 6.2</p> <p>3. Improved image quality with more natural color reproduction for a lifelike appearance and enhanced auto white balance to deliver more stable and balanced video. This provides users with clearer, more true-to-life visuals.</p> <p>4. Able to use resolution of 1080i60/1080i59/1080i50.</p> <p>5. Redefine the NDI Camera logic to use the model's name combined with the last 6 digits of the MAC address.</p> <p>Note: When upgrading an existing TR615 camera to FW V25, the hostname will</p>																				

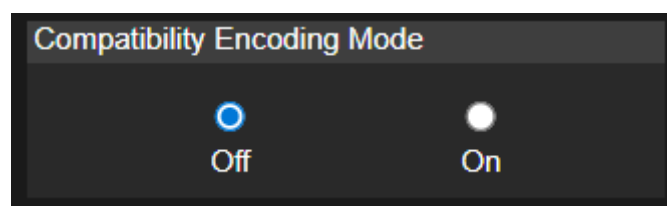
remain unchanged. However, once the "Default" option is executed, the Camera ID will update to the model's name combined with the last 6 digits of the MAC address.



6. **Compatibility Encoding Mode:** When enabled, the camera uses Multi-Slice encoding to improve compatibility and performance on certain devices when playing UHD content.

Note 1: Recommended to enable only for specific decoding compatibility requirements; otherwise, it can remain off by default.

Note 2: Multi-Slice encoded data can be decoded using multiple threads, whereas without it, decoding is single-threaded. This can significantly reduce CPU load on systems using software decoding.



7. **GOP Value:** This parameter sets the number of frames between two I-frames (key frames) to control the insertion frequency of I-frames in the video.

When **I-VOP Interval** is set to 0 seconds, the system inserts I-frames based on the GOP Value.

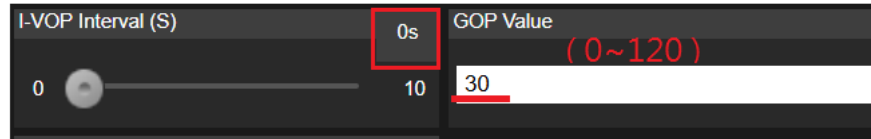
When **I-VOP Interval** > 0, the system inserts I-frames according to the specified time interval, and the GOP Value will not be used.

Note:

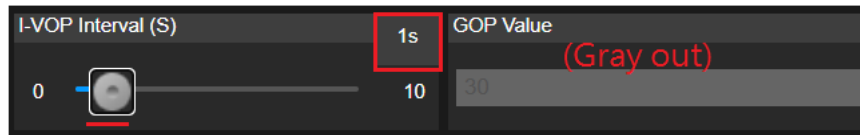
An I-frame (key frame) is a type of frame in video compression with the following characteristics:

- A. It is a fully encoded frame that can be decoded independently of other frames.
Commonly used as the starting frame of a GOP (Group of Pictures).
- B. Helps quickly restore clear images during scene changes or fast motion.
- C. More I-frames improve video stability and decoding ease but increase file size.

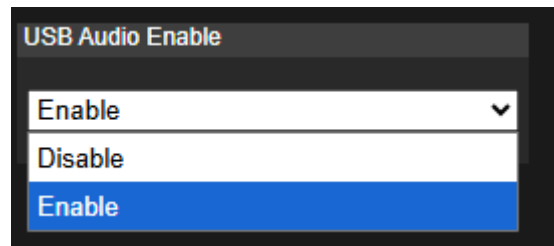
When the I-VOP Interval is set to 0 seconds, users can configure the GOP value between 0 and 120 to control the frequency of I-frame insertion.



When the I-VOP Interval is greater than 0 seconds, the GOP setting is disabled and grayed out.



8. UAC can now be enabled or disabled independently in Standard/NDI mode, while it is automatically disabled in Teams/Zoom mode to comply with certification requirements. This ensures compatibility and reduces potential configuration conflicts for users.



Known issue

1. We recommend using the Chrome browser for configuring webpages.
2. HTTPS: Enable HTTPS to establish a secure connection between the browser and the camera. To enable HTTPS, please follow the steps below.
 - A. Obtain an SSL certificate in base-64 encoding format for encryption and decryption, and a private key in PKCS#8 format (must be unencrypted).
 - B. Convert the required certificate content into PEM format. The SSL certificate uploaded to the camera must be in PEM format.
 - C. In the HTTPS settings field, select "On", then click "Choose File" to select the certificate file, and then click "Upload".